



edilon)(sedra SDS-M (Sound Damping System - Modular)



edilon)(sedra SDS-M (Sound Damping System - Modular)

edilon)(sedra SDS-M (Modular Sound Damping System) is a cost effective, electrical insulating, vibration attenuation (dBv) and airborne noise (dBA) reducing solution for light rail and in particular for tramway applications, which is easy and quick to install. Two installation methods can be used: Top-Down or Bottom-Up.

General advantages

- Cost effective rail fastening system;
- 100% recycled rubber crumb material;
- Easy and quick to build;
- Effective PU based joint sealant material by edilon)(sedra;
- Can be adapted with different types of resilient rail foot profiles to match specific track requirements;
- Rails can easily be fully isolated at construction site or off-site;
- Does not require tie-bars and/or rail anchoring under normal track conditions;
- Well established in various countries with a impressive track record;
- Provides good electrically track isolation according to DIN 50122-2;
- Fully proven system.

Testing

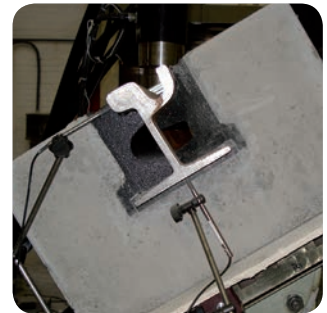
edilon)(sedra SDS-M is fully equipped with all necessary state-of-the-art test equipment to carry out performance tests, static tests, dynamic tests, fatigue tests, physical tests, mechanical tests, chemical tests, etc. to ensure highest constant quality of the products and systems.

Installation, Tools & Equipment

edilon)(sedra SDS-M can be installed easy and quick. No special (heavy duty) equipment is required. edilon)(sedra SDS-M Track Alignment Portals (TAP) are to be used for the correct track alignment when using the TopDown installation method, as the preferred installation method. SDS-M TAP and a specially designed Fillerblock cutter can be supplied by edilon)(sedra. Detailed installation instruction manuals, training plans and on-site training can be provided by edilon)(sedra as well, to ensure correct installation and consequently highest track quality.

Application areas

- Grass track application;
- Paved track areas, cobble stones or imprint concrete (for pedestrians and bicycles);
- Paved-in track with concrete top surface or with asphalt top surface (for bus lanes and in-street use);
- Tram depots.



For more information please contact our Territory Sales Offices @ www.edilonsedra.com

Please ask for our detailed product and system information sheets.

