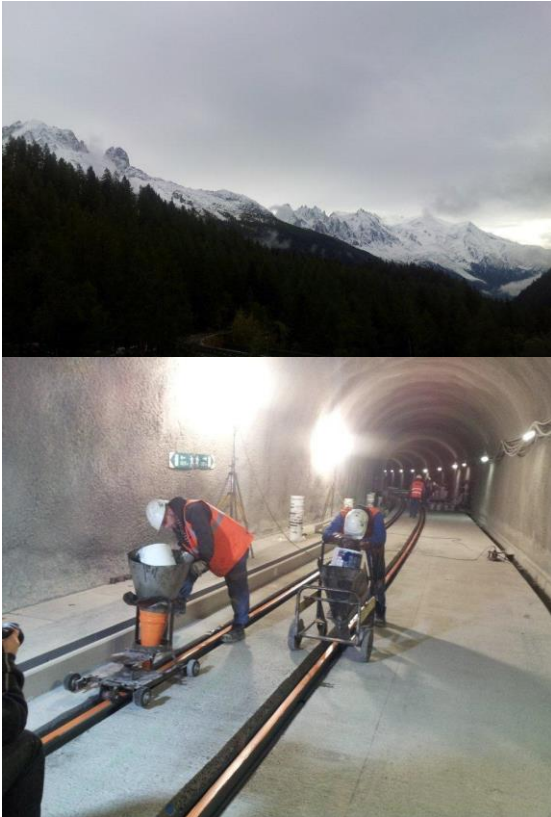




Location	France, mountain pass 'Col des Montets' (line St Gervais/Chamonix)
Project	Tunnel de Montets
Length	1800m
Application	June 2013
Rail profile	46E2 - U33
Details	edilon)(sedra ERS (Embedded Rail System)
Target	Modernization of the Alpine valley track: a railway tunnel which can be used by both trains and cars/trucks in winter times.
Client	RFF, France

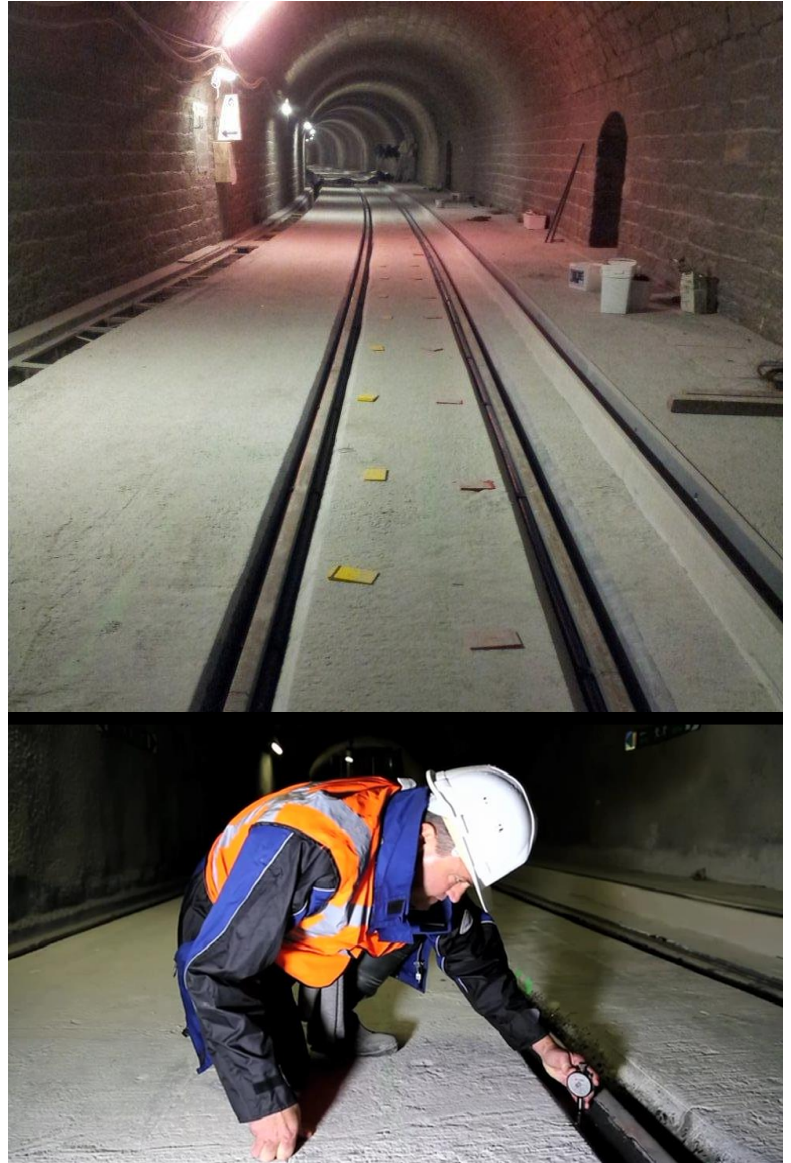
Always a step ahead
in rail systems!



Located in the valley, the tunnel of Montets has a double feature, unique in France and elsewhere: It has been converted to a railway tunnel which can also be used by cars and trucks when the mountain pass "Col des Montets" is closed to traffic due to winter weather conditions.

The refurbishment with edilon)(sedra ERS Embedded Rail System was an important part of the modernisation of the Tunnel de Montets (line St. Gervais - Chamonix). The installed Embedded Rail System not only improved the accessibility, safety and environment, it also offers (local) economic advantages because of the efficient use of the tunnel.

edilon)(sedra ERS (Embedded Rail System) has changed the concept of discretely supported rails by means of sleepers or blocks, into continuously supported rails. By virtue of the position-stable integration of the rails into a concrete or steel channel structure, track loads have a negligible effect on track gauge, position and buckling. This homogeneous elastic support is providing the same dynamic spring and damping behavior as e.g. ballasted track under traffic load, but completely eliminates the influences of individual rail seats or sleepers.



SCAN the QR-code to watch the movie which shows the refurbishment of the track!



edilon)(sedra vision and mission points:

-)(*Tailor-made solutions for railways and urban transit*
-)(*Manufacturer of "n&v products" developed in our R&D lab facilities*
-)(*Your partner for DCM-projects (Design Construct Maintain)*
-)(*Decades of practice-proven products and technology*