



edilon)(sedra **EBS**
Embedded Block System

case

Edition 73 | 2014



Location	Vitoria-Gasteiz, Spain
Project	Vitoria tramway
Length	16.5 km
Application	2007 - 2010
Rail profile	54E1 (UIC54) and 60R2 (Ri60N)
System	edilon)(sedra EBS (Embedded Block System) edilon)(sedra ERS (Embedded Rail System)
Line speed	60 km/h
Axle load	12 t
Client	Basque Government

Always a step ahead
in rail systems.....

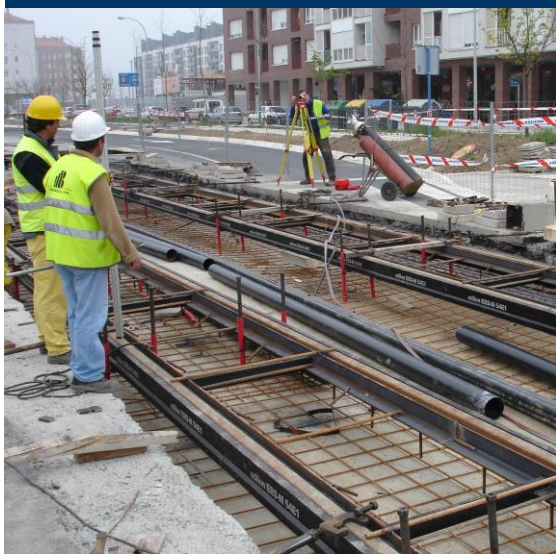
edilon)(sedra

www.edilonsedra.com



The Vitoria-Gasteiz tramway began operation on December 23, 2008, a route from the centre to the neighborhood of Ibaiondo. By December 2008, 12 of 18 stations were open. On July 10, 2009, the second line was opened to Abetxuko.

The tramway has proven to contribute to the economic development of the city and will be expanded; studies of possible extensions were already underway during construction and priorities will be determined on social and economic criteria. The university area to the south of the city centre, which would also serve the railway station, and Forondo airport, 8 km to the north, are prime destinations.



edilon)(sedra vision and mission points:

-)(Tailor-made solutions for railways and urban transit
-)(Manufacturer of "n&v products" developed in our R&D lab facilities
-)(Your partner for DCM-projects (Design Construct Maintain)
-)(Decades of practice-proven products and technology