



case

Edition 96 | 2014

edilon)(sedra HSTS Heavy rail Slab Track System



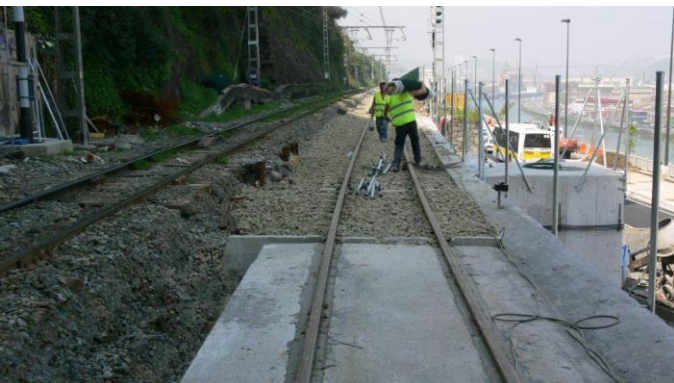
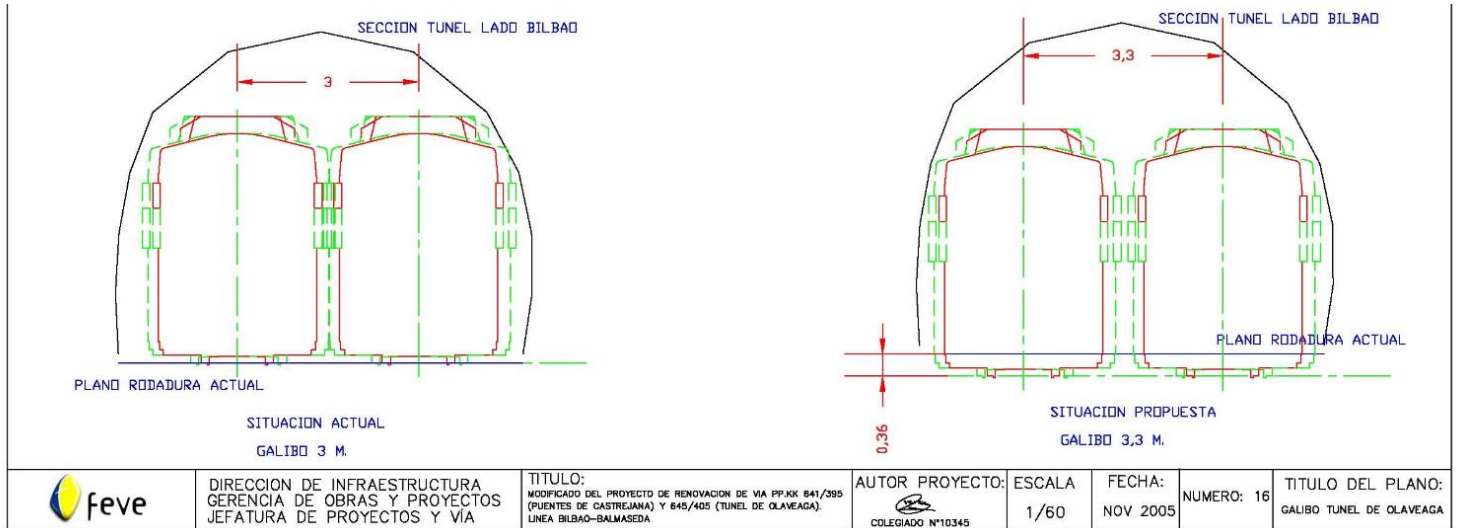
Location	Bilbao, Spain
Project	Olaveaga Tunnel. Bilbao-Balmaseda Line (freight and passenger trains)
Length	240 m double track
Application	2008
Rail profile	1:20 inclination 60E1 rails
Details	edilon)(sedra HSTS offers a significant reduction in construction height, which made the tunnel suitable for a catenary system. Can be installed both prefab and in-situ.
Target	Electrification and refurbishment of tunnel by replacing old ballasted track by edilon)(sedra HSTS. Vertical gauge improvement by approximately 40 cm in order to apply postum catenary system. Accessibility for emergency vehicles. Short construction period.

Client FEVE. Spanish Railtrack Administration

edilon)(sedra

www.edilonsedra.com

Always a step ahead in rail systems!



edilon)(sedra vision and mission points:

-) (Tailor-made solutions for railways and urban transit
-) (Manufacturer of "n&v products" developed in our R&D lab facilities
-) (Your partner for DCM-projects (Design Construct Maintain)
-) (Decades of practice-proven products and technology