



# case

Edition 97 | 2014

## edilon)(sedra HSTS Heavy rail Slab Track System



**Location** Metroport Auckland, New Zealand

**Project** Twin track level crossing for container terminal

**Length** 22 m double track

**Application** 2014

**Rail profile** NZR 50kg

**Details** Suitable for heavy axle loads of container trains, reach stackers and other heavy vehicles. Virtually maintenance-free system.

**Target** Removal of existing tracks and replacement with 11mts long precast concrete panels and edilon)(sedra ERS (Embedded Rail System).

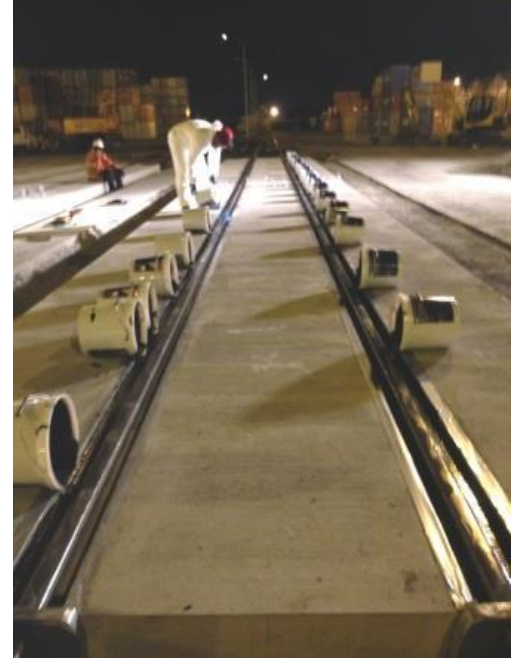
**Client** Kiwi Rail

Always a step ahead  
in rail systems!

# edilon)(sedra

[www.edilonsedra.com](http://www.edilonsedra.com)





Scan the QR-code for watching the movie: "Installation edilon)(sedra HSTS for container terminal TCT Venlo, The Netherlands".



edilon)(sedra vision and mission points:

- ) ( Tailor-made solutions for railways and urban transit*
- ) ( Manufacturer of "n&v products" developed in our R&D lab facilities*
- ) ( Your partner for DCM-projects (Design Construct Maintain)*
- ) ( Decades of practice-proven products and technology*