



edilon)(sedra Corkelast® LCS
Level Crossing System

case

Edition 144 | 2016



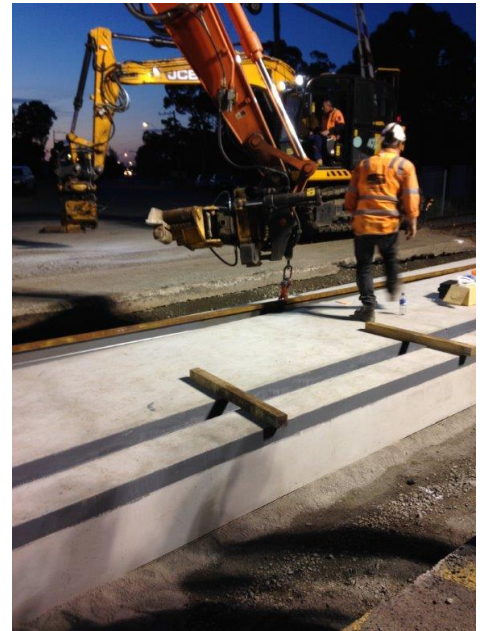
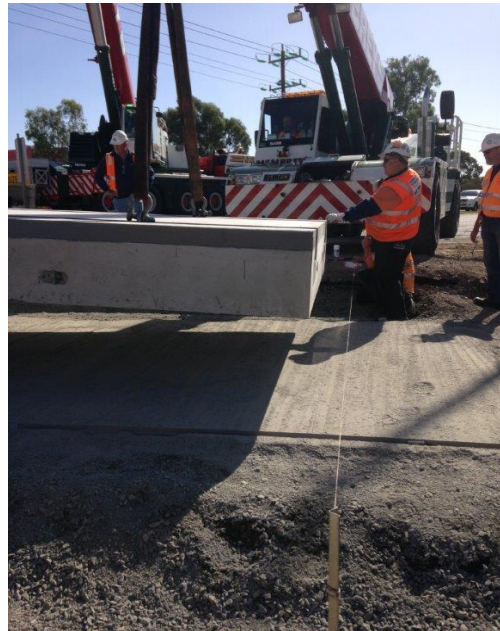
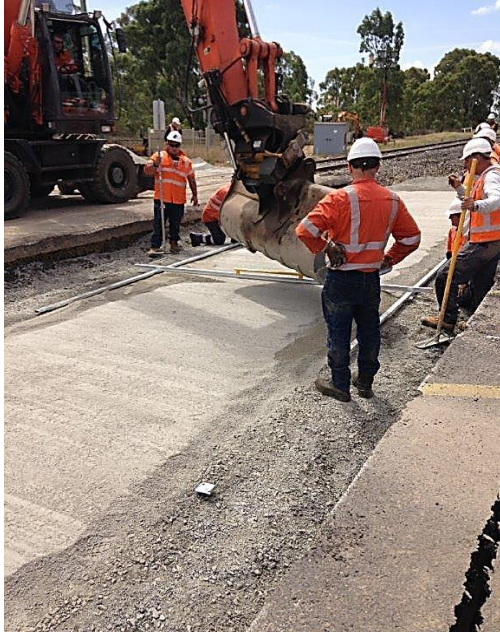
Location	Melbourne, Australia
Project	Renewal of a level crossing at Greens Rd. in Melbourne with Corkelast® edilon)(sedra LCS. MTM needed to do frequent maintenance and repairs (every 4-5 years) on the conventional system.
Length	30 m
Application	2015
Rail profile	AS 60
System	edilon)(sedra Corkelast® LCS
Target	Main target was to provide a maintenance-free level crossing within a very short time span of installation. Corkelast® LCS has a proven lifetime of more than 30 years without maintenance.
Client	Metro Trains Melbourne (MTM)

Always a step ahead
in rail systems!

edilon)(sedra Corkelast® LCS Level Crossing System

case

Edition 144 | 2016



edilon)(sedra stands for:

-)(Tailor-made solutions for railways and urban transit
-)(Manufacturer of "noise & vibration reducing systems" developed in our R&D lab facilities
-)(Your partner for DCM-projects (Design Construct Maintain)
-)(Decades of practice-proven systems and technology



SCAN this QR-code for
watching our movie:
"Sustainable solution for
level crossings on SNCF
main line Paris-Lille"

edilon)(sedra
www.edilonsedra.com