



# case

Edition 10 | 2013

## edilon)(sedra ERS Embedded Rail System

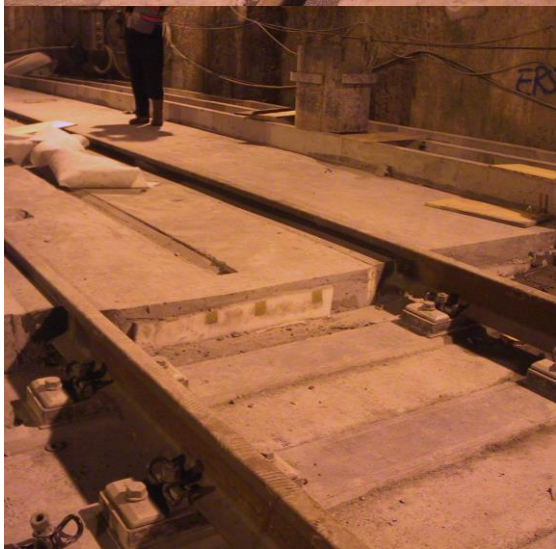
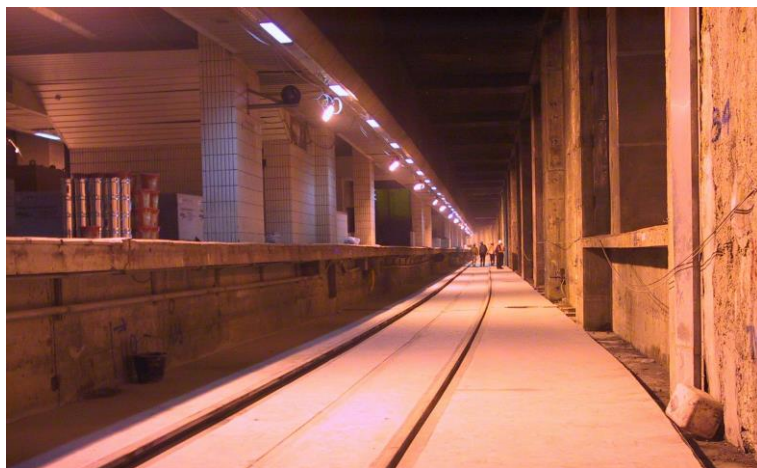


<b>Location</b>	Taiwan, Taipei
<b>Project</b>	New Taipei High Speed Rail Station
<b>Length</b>	4 x 500m
<b>Application</b>	2004
<b>Rail profile</b>	UIC60
<b>Details</b>	Installation of edilon)(sedra ERS rail fastening in a monolithic concrete slab.
<b>Client</b>	Taiwan High Speed Rail Co.

Always a step ahead  
in rail systems!

**edilon)(sedra**  
www.edilonsedra.com





edilon)(sedra vision and mission points:

- )( Tailor-made solutions for railways and urban transit*
- )( Manufacturer of "n&v products" developed in our R&D lab facilities*
- )( Your partner for DCM-projects (Design Construct Maintain)*
- )( Decades of practice-proven products and technology*