



case

Edition 93 | 2014

edilon)(sedra ERS Embedded Rail System



Location	Al Nariyah, Kingdom of Saudi Arabia (26° 40'38.45"N 49° 38'39.03"E)
Project	Al Nariyah Depots
Length	210 m (first ERS-phase)
Application	June 2013
Rail profile	60E1
Details	edilon)(sedra ERS (Embedded Rail System) for depots
Target	Good accessibility within a busy desert depot – robustness against sand mitigation and extreme climatological conditions in open areas
Client	Yapi Merkezi

Always a step ahead
in rail systems.....

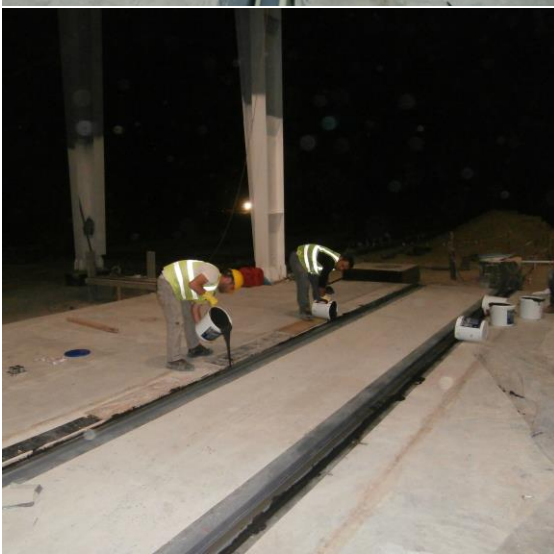
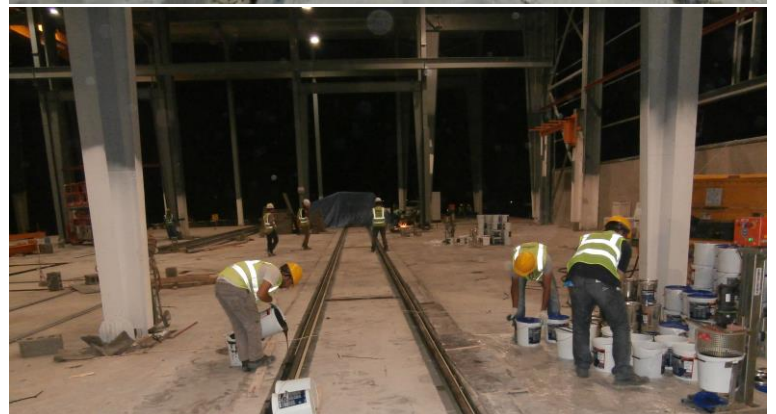
edilon)(sedra
www.edilonsedra.com



A new standard for depots in desert areas

The installation was completed with the majority of the track exposed to the extreme desert elements (sand and high ambient temperatures).

The depot was constructed with open sided walling allowing for future movement of machinery and locomotive parts.



edilon)(sedra vision and mission points:

-)(Tailor-made solutions for railways and urban transit
-)(Manufacturer of "n&v products" developed in our R&D lab facilities
-)(Your partner for DCM-projects (Design Construct Maintain)
-)(Decades of practice-proven products and technology