



case

Edition 97 | 2014

edilon)(sedra HSTS Heavy Rail Slab Track System



Location	Metroport Auckland, New Zealand
Project	Twin track level crossing for container terminal
Length	22m of double track
Application	2014
Rail profile	NZR 50kg
Target	To replace the poor performing original level crossing (a traditional type, using timber sleepers and ballast with asphalt on top) by Heavy Duty monolithic precast concrete slabs, using our Corkelast® ERS Embedded Rail System, allowing the container trains and the reach stackers to travel easily across the depot.
Details	100 ton! axle-load reach stackers and 23 ton axle-load freight trains, traveling 5 km/h. A 250-tons crane was used to lift the 11m long prefab concrete slabs in place
Client	Kiwi Rail

Always a step ahead
in rail systems!

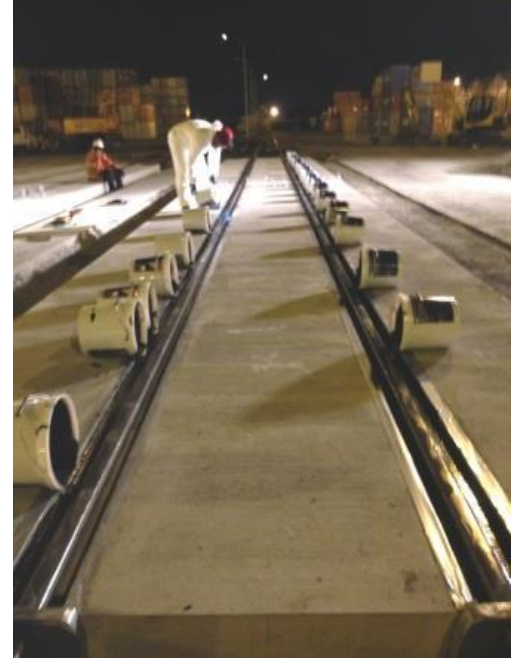
edilon)(sedra

www.edilonsedra.com

edilon)(sedra HSTS
Heavy rail Slab Track System

case

Edition 97 | 2014



Scan the QR-code for watching the movie: "Installation edilon)(sedra HSTS for container terminal TCT Venlo, The Netherlands".



edilon)(sedra stands for:

-) (Tailor-made solutions for railways and urban transit*
-) (Manufacturer of "n&v products" developed in our R&D lab facilities*
-) (Your partner for DCM-projects (Design Construct Maintain)*
-) (Decades of practice-proven products and technology*

edilon)(sedra

www.edilonsedra.com